

Rural Northeast

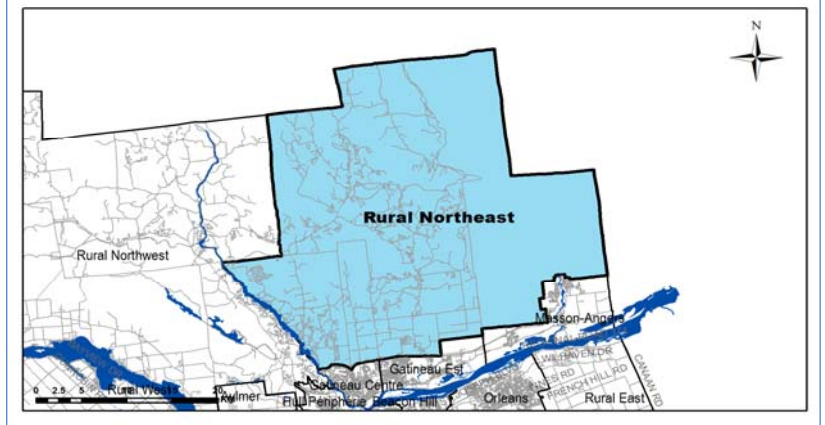
Demographic Characteristics

Population	33,470	Actively Travelled	24,900
Employed Population	17,090	Number of Vehicles	24,450
Households	12,010	Area (km ²)	1,028.4

Occupation Status (age 5+)	Male	Female	Total
Full Time Employed	8,880	7,110	15,990
Part Time Employed	410	680	1,100
Student	4,010	3,600	7,620
Retiree	2,120	2,270	4,390
Unemployed	260	180	430
Homemaker	30	930	960
Other	300	280	580
Total:	16,010	15,060	31,070

Traveller Characteristics	Male	Female	Total
Transit Pass Holders	810	1,220	2,030
Licensed Drivers	12,700	11,620	24,320
Telecommuters	80	40	120
Trips made by residents	35,410	34,690	70,100

Selected Indicators	
Daily Trips per Person (age 5+)	2.26
Vehicles per Person	0.73
Number of Persons per Household	2.79
Daily Trips per Household	5.84
Vehicles per Household	2.04
Workers per Household	1.42
Population Density (Pop/km ²)	30

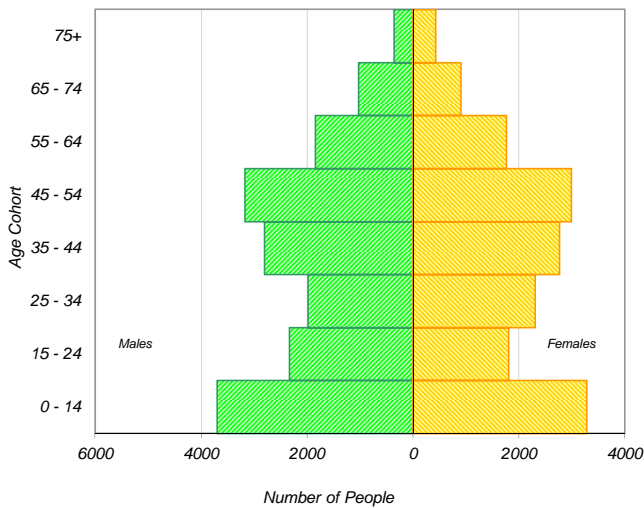


Household Size		
1 person	1,960	16%
2 persons	4,150	35%
3 persons	2,230	19%
4 persons	2,460	20%
5+ persons	1,220	10%
Total:	12,010	100%

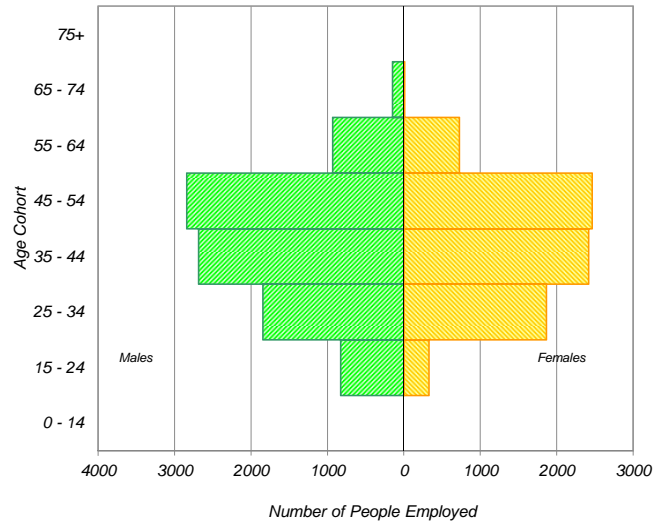
Households by Vehicle Availability		
0 vehicles	230	2%
1 vehicle	3,290	27%
2 vehicles	5,740	48%
3 vehicles	1,770	15%
4+ vehicles	970	8%
Total:	12,010	100%

Households by Dwelling Type		
Single-detached	10,710	89%
Semi-detached	350	3%
Townhouse	0	0%
Apartment/Condo	950	8%
Total:	12,010	100%

Population



Employed Population

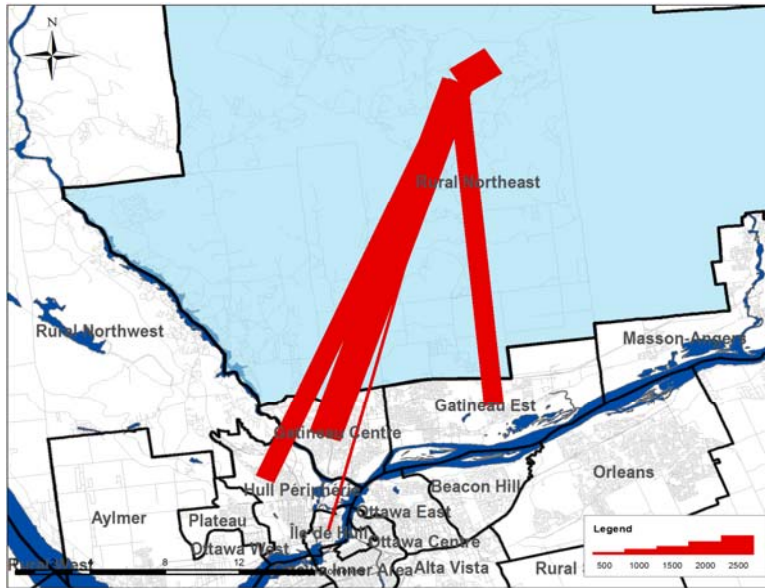


* In 2005 data was only collected for household members aged 11+ therefore these results cannot be compared to the 2011 data.

Travel Patterns

Top Five Destinations of Trips from Rural Northeast

AM Peak Period



Summary of Trips to and from Rural Northeast

AM Peak Period (6:30 - 8:59)

Districts	Destinations of Trips From		Origins of Trips To	
	District	% Total	District	% Total
Ottawa Centre	800	5%	0	0%
Ottawa Inner Area	500	3%	0	0%
Ottawa East	100	1%	90	2%
Beacon Hill	80	1%	90	2%
Alta Vista	320	2%	10	0%
Hunt Club	20	0%	30	1%
Merivale	30	0%	30	1%
Ottawa West	170	1%	60	1%
Bayshore / Cedarview	70	0%	0	0%
Orléans	20	0%	10	0%
Rural East	0	0%	40	1%
Rural Southeast	70	0%	0	0%
South Gloucester / Leirtrim	0	0%	20	0%
South Nepean	20	0%	10	0%
Rural Southwest	0	0%	0	0%
Kanata / Stittsville	50	0%	30	1%
Rural West	0	0%	0	0%
Île de Hull	990	6%	90	2%
Hull Périphérie	2,010	13%	240	4%
Plateau	190	1%	70	1%
Aylmer	190	1%	0	0%
Rural Northwest	360	2%	50	1%
Pointe Gatineau	3,170	20%	540	10%
Gatineau Est	2,210	14%	440	8%
Rural Northeast	3,240	21%	3,240	60%
Buckingham / Masson-Angers	1,060	7%	300	6%
Ontario Sub-Total:	2,250	14%	420	8%
Québec Sub-Total:	13,420	86%	4,970	92%
Total:	15,670	100%	5,390	100%

Trips by Trip Purpose

24 Hours	From District		To District		Within District	
Work or related	10,670	37%	1,970	7%	1,910	17%
School	4,890	17%	300	1%	1,600	14%
Shopping	2,900	10%	330	1%	490	4%
Leisure	2,440	8%	1,140	4%	980	9%
Medical	1,050	4%	70	0%	30	0%
Pick-up / drive passenger	2,430	8%	920	3%	1,080	10%
Return Home	3,430	12%	23,350	81%	4,700	43%
Other	1,040	4%	680	2%	260	2%
Total:	28,850	100%	28,760	100%	11,050	100%

AM Peak (06:30 - 08:59)	From District		To District		Within District	
Work or related	5,900	48%	1,180	55%	950	29%
School	4,320	35%	250	12%	1,480	46%
Shopping	170	1%	0	0%	0	0%
Leisure	220	2%	70	3%	70	2%
Medical	320	3%	0	0%	0	0%
Pick-up / drive passenger	1,110	9%	210	10%	610	19%
Return Home	70	1%	310	15%	60	2%
Other	310	2%	110	5%	60	2%
Total:	12,420	100%	2,130	100%	3,230	100%

PM Peak (15:30 - 17:59)	From District		To District		Within District	
Work or related	350	10%	40	0%	90	3%
School	0	0%	0	0%	0	0%
Shopping	380	11%	140	1%	70	2%
Leisure	560	16%	350	3%	290	9%
Medical	60	2%	10	0%	0	0%
Pick-up / drive passenger	400	12%	290	2%	270	8%
Return Home	1,540	45%	10,730	92%	2,440	75%
Other	110	3%	100	1%	100	3%
Total:	3,400	100%	11,660	100%	3,260	100%

Peak Period (%)	Total:	% of 24 Hours	Within District (%)
24 Hours	68,660		16%
AM Peak Period	17,780	26%	18%
PM Peak Period	18,320	27%	18%

Trips by Primary Travel Mode

24 Hours	From District		To District		Within District	
Auto Driver	20,370	71%	20,310	71%	6,780	61%
Auto Passenger	4,010	14%	4,180	15%	1,820	16%
Transit	1,530	5%	1,620	6%	40	0%
Bicycle	100	0%	80	0%	0	0%
Walk	70	0%	50	0%	550	5%
Other	2,770	10%	2,520	9%	1,870	17%
Total:	28,850	100%	28,760	100%	11,060	100%

AM Peak (06:30 - 08:59)	From District		To District		Within District	
Auto Driver	7,320	59%	1,650	77%	1,620	50%
Auto Passenger	1,620	13%	210	10%	580	18%
Transit	870	7%	150	7%	0	0%
Bicycle	30	0%	0	0%	0	0%
Walk	20	0%	0	0%	70	2%
Other	2,550	21%	120	6%	970	30%
Total:	12,410	100%	2,130	100%	3,240	100%

PM Peak (15:30 - 17:59)	From District		To District		Within District	
Auto Driver	2,570	75%	7,560	65%	2,000	61%
Auto Passenger	520	15%	1,550	13%	650	20%
Transit	210	6%	920	8%	20	1%
Bicycle	0	0%	30	0%	0	0%
Walk	20	1%	20	0%	50	2%
Other	90	3%	1,580	14%	550	17%
Total:	3,410	100%	11,660	100%	3,270	100%

Avg Vehicle Occupancy	From District		To District		Within District	
24 Hours	1.20		1.21		1.27	
AM Peak Period	1.22		1.13		1.36	
PM Peak Period	1.20		1.21		1.33	

Transit Modal Split	From District		To District		Within District	
24 Hours	6%		6%		0%	
AM Peak Period	9%		7%		0%	
PM Peak Period	6%		9%		1%	