

# Rural Northwest

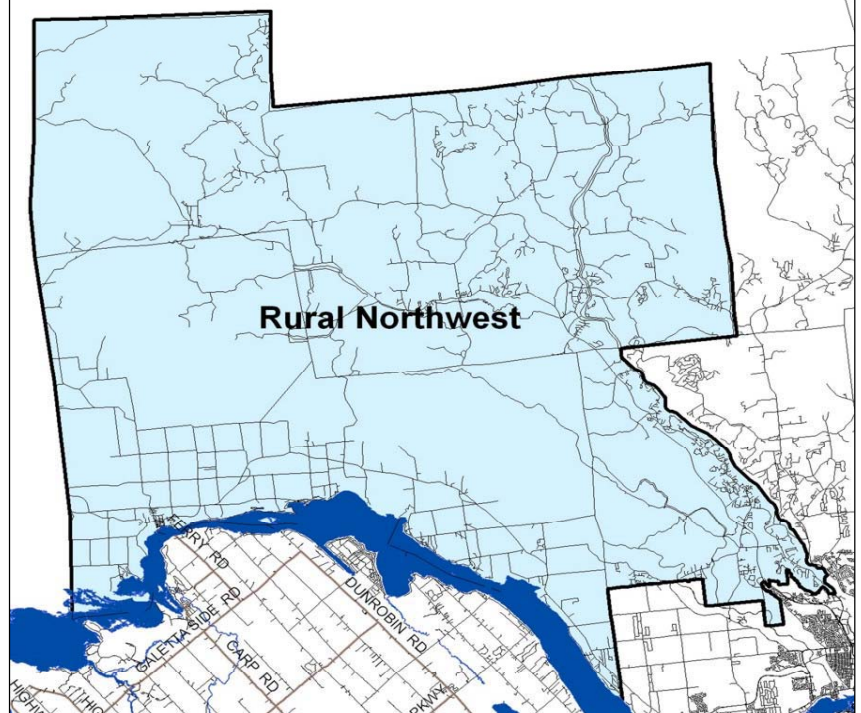
## Demographic Characteristics

Population	18,280	Number of Vehicles	13,680
Households	7,250	Area (km <sup>2</sup> )	1,235.2
Actively Travelled	12,730		

Occupation	Male	Female	Total	%
Full Time Employed	4,610	3,540	8,150	52%
Part Time Employed	250	640	890	6%
Student	1,000	1,150	2,150	14%
Retiree	1,340	1,440	2,780	18%
Homemaker	110	730	840	5%
Other	410	320	730	5%
<b>Total:</b>	<b>7,720</b>	<b>7,820</b>	<b>15,540</b>	<b>100%</b>

Traveller Characteristics	Male	Female	Total
Transit Pass Holders	140	390	530
Licensed Drivers	6,760	6,490	13,250
Telecommuters	600	500	1,100

Selected Indicators	
Daily Trips per Person (age 11+)	2.54
Vehicles per Person	0.75
Number of Persons per Household	2.52
Daily Trips per Household	5.47
Vehicles per Household	1.89

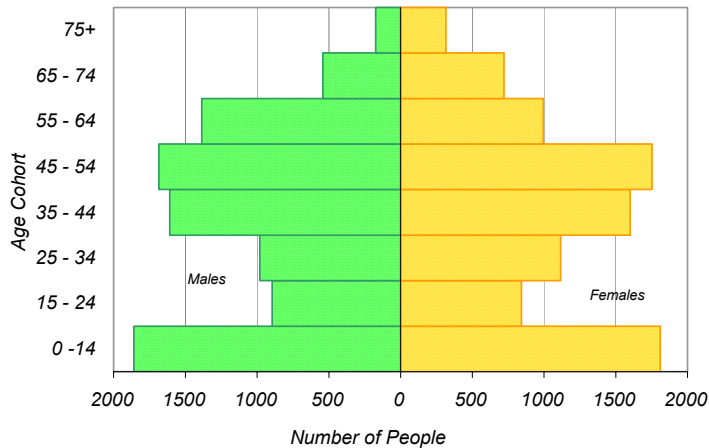


Household Size		
1 person	1,570	22%
2 persons	2,770	38%
3 persons	1,320	18%
4 persons	970	13%
5+ persons	620	9%
<b>Total:</b>	<b>7,250</b>	<b>100%</b>

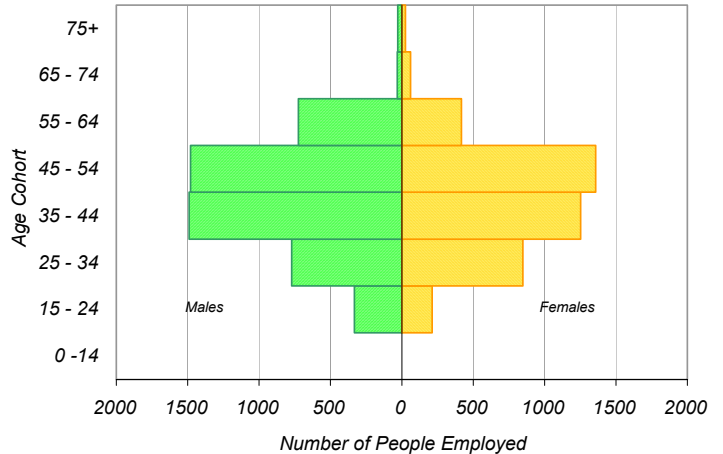
Households by Vehicle Availability			
0 vehicle	110	2%	
1 vehicle	2,140	29%	
2 vehicles	3,990	55%	
3 vehicles	730	10%	
4+ vehicles	290	4%	
<b>Total:</b>	<b>7,260</b>	<b>100%</b>	

Households by Dwelling Type		
Single-detached	6,620	91%
Semi-detached	160	2%
Townhouse	60	1%
Apartment	190	3%
Other	230	3%
<b>Total:</b>	<b>7,260</b>	<b>100%</b>

Population



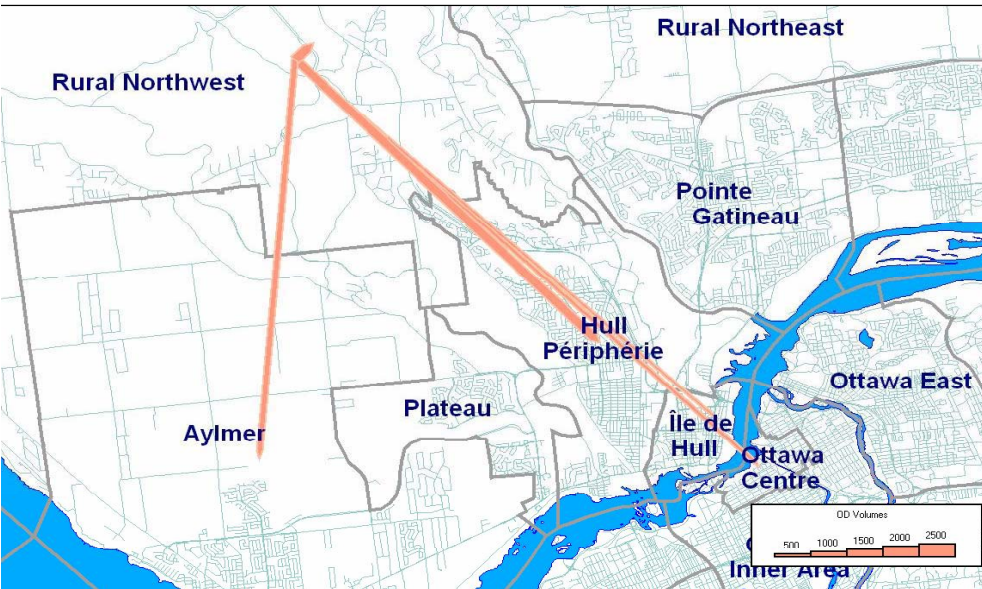
Employed Labour Force



Additional sources for demographic information: City of Ottawa, Institut de la statistique du Québec

**Travel Patterns**

**Top five destinations for trips from Rural Northwest, AM Peak Period**



Full map of TRANS Districts appears in Exhibit 5-1.

**Summary of Trips from Rural Northwest**

District of Destination	Trips	% Total
Ottawa Centre	740	9%
Ottawa Inner Area	490	6%
Ottawa East	180	2%
Beacon Hill	90	1%
Alta Vista	350	4%
Hunt Club	70	1%
Merivale	210	2%
Ottawa West	210	2%
Bayshore / Cedarview	60	1%
Orléans	10	0%
Rural East	0	0%
Rural Southeast	0	0%
South Gloucester / Leitrim	50	1%
South Nepean	30	0%
Rural Southwest	50	1%
Kanata / Stittsville	80	1%
Rural West	0	0%
Île de Hull	600	7%
Hull Périphérie	1,560	19%
Plateau	140	2%
Aylmer	1,020	12%
Rural Northwest	1,870	22%
Pointe Gatineau	250	3%
Gatineau Est	240	3%
Rural Northeast	60	1%
Buckingham / Masson-Anger	60	1%
Ontario Sub-Total:	2,620	31%
Québec Sub-Total:	5,800	69%
<b>Total:</b>	<b>8,420</b>	<b>100%</b>

**Trips by Trip Purpose**

24 Hours	From District		To District		Within District	
Work or related	5,800	35%	1,660	10%	1,250	13%
School	2,130	13%	100	1%	480	5%
Shopping	1,570	10%	440	3%	660	7%
Leisure	1,620	10%	1,380	8%	1,440	15%
Medical	500	3%	170	1%	70	1%
Pick up/ Drop off	930	6%	680	4%	870	9%
Return home	3,070	19%	11,410	70%	4,470	46%
Other	720	4%	440	3%	470	5%
<b>Total:</b>	<b>16,340</b>	<b>100%</b>	<b>16,280</b>	<b>100%</b>	<b>9,710</b>	<b>100%</b>

AM Peak Period	From District		To District		Within District	
Work or related	3,720	57%	850	63%	780	42%
School	1,840	28%	70	5%	440	24%
Shopping	90	1%	0	0%	50	3%
Leisure	200	3%	20	1%	50	3%
Medical	110	2%	60	4%	0	0%
Pick up/ Drop off	500	8%	160	12%	370	20%
Return home	50	1%	120	9%	160	9%
Other	50	1%	60	4%	10	1%
<b>Total:</b>	<b>6,560</b>	<b>100%</b>	<b>1,340</b>	<b>100%</b>	<b>1,860</b>	<b>100%</b>

PM Peak Period	From District		To District		Within District	
Work or related	110	6%	10	0%	40	2%
School	20	1%	0	0%	0	0%
Shopping	190	10%	190	3%	60	3%
Leisure	180	10%	280	5%	240	12%
Medical	10	1%	30	0%	0	0%
Pick up/ Drop off	60	3%	330	5%	190	9%
Return home	1,200	64%	5,190	85%	1,440	70%
Other	100	5%	70	1%	80	4%
<b>Total:</b>	<b>1,870</b>	<b>100%</b>	<b>6,100</b>	<b>100%</b>	<b>2,050</b>	<b>100%</b>

Peak Period (%)	Total:	% of 24 Hours	Within District (%)
24 Hours	42,330		23%
AM Peak Period	9,760	23%	19%
PM Peak Period	10,020	24%	20%

**Trips by Travel Mode**

24 Hours	From District		To District		Within District	
Auto Driver	11,700	72%	11,690	72%	6,980	72%
Auto Passenger	2,510	15%	2,600	16%	1,050	11%
Public Transit	540	3%	440	3%	10	0%
Bicycle	120	1%	100	1%	90	1%
Walk	90	1%	90	1%	860	9%
Other	1,380	8%	1,340	8%	710	7%
<b>Total:</b>	<b>16,340</b>	<b>100%</b>	<b>16,260</b>	<b>100%</b>	<b>9,700</b>	<b>100%</b>

AM Peak Period	From District		To District		Within District	
Auto Driver	4,110	63%	1,010	76%	1,270	68%
Auto Passenger	850	13%	110	8%	70	4%
Public Transit	290	4%	140	11%	0	0%
Bicycle	40	1%	20	2%	20	1%
Walk	0	0%	10	1%	120	6%
Other	1,270	19%	40	3%	390	21%
<b>Total:</b>	<b>6,560</b>	<b>100%</b>	<b>1,330</b>	<b>100%</b>	<b>1,870</b>	<b>100%</b>

PM Peak Period	From District		To District		Within District	
Auto Driver	1,320	70%	4,120	68%	1,530	74%
Auto Passenger	330	17%	900	15%	180	9%
Public Transit	160	8%	210	3%	0	0%
Bicycle	40	2%	60	1%	20	1%
Walk	10	1%	20	0%	170	8%
Other	30	2%	780	13%	160	8%
<b>Total:</b>	<b>1,890</b>	<b>100%</b>	<b>6,090</b>	<b>100%</b>	<b>2,060</b>	<b>100%</b>

Transit Modal Split	From District	To District	Within District
24 Hours	4%	3%	0%
AM Peak Period	6%	11%	0%
PM Peak Period	9%	4%	0%