

Rural Northwest

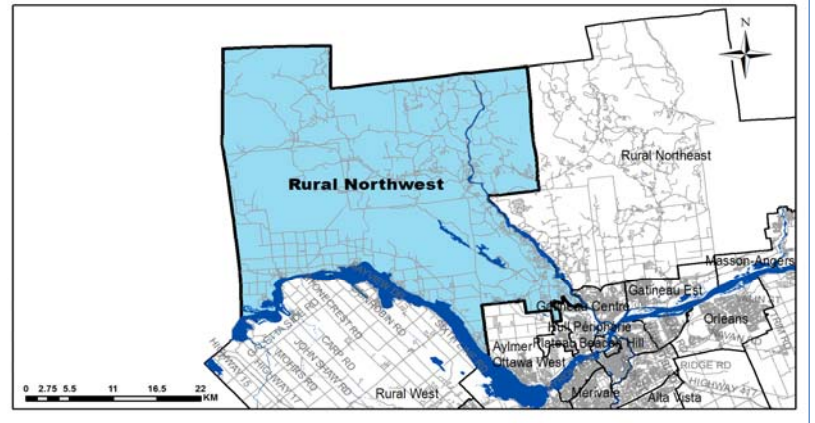
Demographic Characteristics

Population	20,310	Actively Travelled	15,360
Employed Population	10,210	Number of Vehicles	15,410
Households	8,010	Area (km ²)	1,242.9

Occupation Status (age 5+)	Male	Female	Total
Full Time Employed	5,100	4,170	9,270
Part Time Employed	430	510	940
Student	2,130	1,940	4,060
Retiree	1,830	1,860	3,690
Unemployed	140	90	220
Homemaker	90	470	560
Other	150	150	300
Total:	9,860	9,180	19,050

Traveller Characteristics	Male	Female	Total
Transit Pass Holders	210	460	670
Licensed Drivers	7,750	7,400	15,150
Telecommuters	20	0	20
Trips made by residents	21,690	22,230	43,920

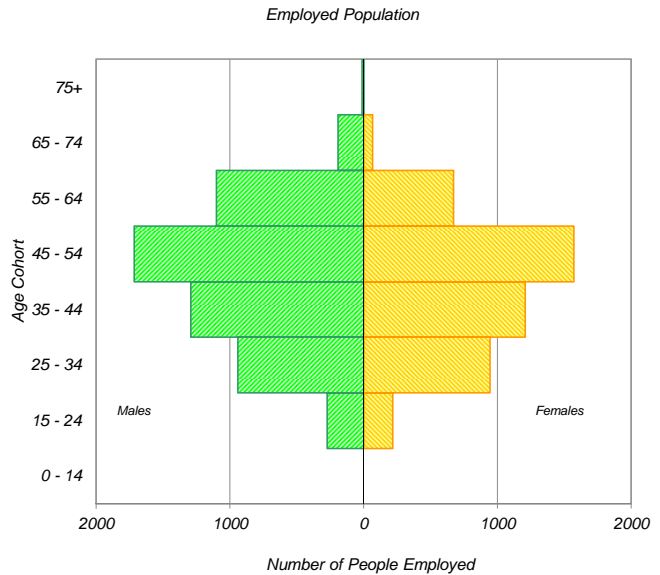
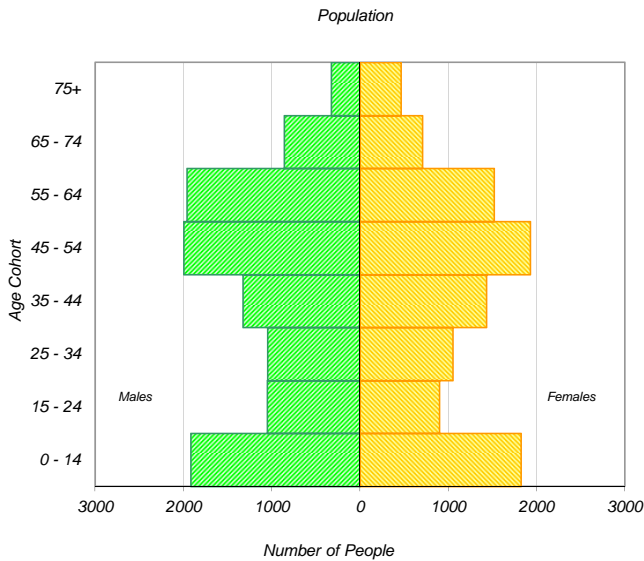
Selected Indicators	
Daily Trips per Person (age 5+)	2.31
Vehicles per Person	0.76
Number of Persons per Household	2.54
Daily Trips per Household	5.48
Vehicles per Household	1.92
Workers per Household	1.27
Population Density (Pop/km ²)	20



Household Size		
1 person	1,780	22%
2 persons	2,980	37%
3 persons	1,410	18%
4 persons	1,260	16%
5+ persons	590	7%
Total:	8,010	100%

Households by Vehicle Availability		
0 vehicles	230	3%
1 vehicle	2,360	29%
2 vehicles	3,840	48%
3 vehicles	1,100	14%
4+ vehicles	470	6%
Total:	8,010	100%

Households by Dwelling Type		
Single-detached	7,390	92%
Semi-detached	130	2%
Townhouse	30	0%
Apartment/Condo	450	6%
Total:	8,010	100%

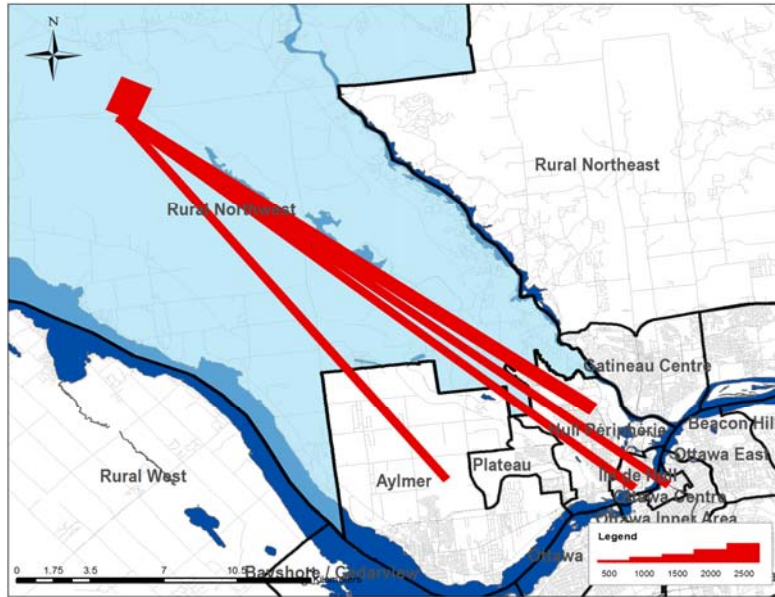


* In 2005 data was only collected for household members aged 11+ therefore these results cannot be compared to the 2011 data.

Travel Patterns

Top Five Destinations of Trips from Rural Northwest

AM Peak Period



Summary of Trips to and from Rural Northwest

AM Peak Period (6:30 - 8:59)

Districts	Destinations of Trips From		Origins of Trips To	
	District	% Total	District	% Total
Ottawa Centre	680	7%	50	1%
Ottawa Inner Area	240	2%	40	1%
Ottawa East	190	2%	10	0%
Beacon Hill	90	1%	30	1%
Alta Vista	300	3%	40	1%
Hunt Club	110	1%	0	0%
Merivale	250	3%	10	0%
Ottawa West	310	3%	20	0%
Bayshore / Cedarview	100	1%	0	0%
Orléans	40	0%	50	1%
Rural East	0	0%	0	0%
Rural Southeast	0	0%	0	0%
South Gloucester / Leitrim	10	0%	20	0%
South Nepean	40	0%	40	1%
Rural Southwest	0	0%	0	0%
Kanata / Stittsville	60	1%	20	0%
Rural West	0	0%	10	0%
Île de Hull	750	8%	50	1%
Hull Périphérie	1,560	16%	260	5%
Plateau	150	2%	90	2%
Aylmer	860	9%	310	6%
Rural Northwest	3,620	36%	3,620	68%
Pointe Gatineau	530	5%	130	2%
Gatineau Est	20	0%	60	1%
Rural Northeast	50	1%	360	7%
Buckingham / Masson-Angers	40	0%	90	2%
Ontario Sub-Total:	2,420	24%	340	6%
Québec Sub-Total:	7,580	76%	4,970	94%
Total:	10,000	100%	5,310	100%

Trips by Trip Purpose

24 Hours	From District		To District		Within District	
Work or related	5,650	32%	1,540	9%	1,880	14%
School	1,830	10%	290	2%	1,450	11%
Shopping	1,640	9%	640	4%	1,360	10%
Leisure	1,380	8%	1,950	11%	1,130	8%
Medical	470	3%	170	1%	260	2%
Pick-up / drive passenger	1,370	8%	1,110	6%	920	7%
Return Home	4,610	26%	11,100	64%	5,950	45%
Other	790	4%	650	4%	420	3%
Total:	17,740	100%	17,450	100%	13,370	100%

AM Peak (06:30 - 08:59)	From District		To District		Within District	
Work or related	3,540	55%	860	51%	1,100	30%
School	1,520	24%	230	14%	1,420	39%
Shopping	100	2%	40	2%	60	2%
Leisure	80	1%	60	4%	60	2%
Medical	190	3%	0	0%	130	4%
Pick-up / drive passenger	550	9%	190	11%	520	14%
Return Home	160	3%	250	15%	160	4%
Other	250	4%	60	4%	170	5%
Total:	6,390	100%	1,690	100%	3,620	100%

PM Peak (15:30 - 17:59)	From District		To District		Within District	
Work or related	30	1%	90	1%	20	1%
School	0	0%	10	0%	0	0%
Shopping	210	9%	210	3%	210	7%
Leisure	180	8%	510	8%	210	7%
Medical	0	0%	50	1%	10	0%
Pick-up / drive passenger	290	12%	500	8%	190	6%
Return Home	1,660	69%	4,970	77%	2,300	77%
Other	30	1%	90	1%	60	2%
Total:	2,400	100%	6,430	100%	3,000	100%

Peak Period (%)	Total:	% of 24 Hours	Within District (%)
24 Hours	48,560		28%
AM Peak Period	11,700	24%	31%
PM Peak Period	11,830	24%	25%

Trips by Primary Travel Mode

24 Hours	From District		To District		Within District	
Auto Driver	12,880	73%	12,720	73%	7,940	59%
Auto Passenger	3,190	18%	3,060	18%	2,290	17%
Transit	450	3%	470	3%	60	0%
Bicycle	190	1%	190	1%	220	2%
Walk	0	0%	0	0%	730	5%
Other	1,030	6%	1,020	6%	2,130	16%
Total:	17,740	100%	17,460	100%	13,370	100%

AM Peak (06:30 - 08:59)	From District		To District		Within District	
Auto Driver	4,080	64%	1,150	68%	1,850	51%
Auto Passenger	1,110	17%	290	17%	620	17%
Transit	270	4%	130	8%	20	1%
Bicycle	50	1%	0	0%	0	0%
Walk	0	0%	0	0%	60	2%
Other	880	14%	110	7%	1,060	29%
Total:	6,390	100%	1,680	100%	3,610	100%

PM Peak (15:30 - 17:59)	From District		To District		Within District	
Auto Driver	1,800	75%	4,630	72%	1,920	64%
Auto Passenger	380	16%	1,010	16%	590	20%
Transit	130	5%	260	4%	0	0%
Bicycle	40	2%	70	1%	70	2%
Walk	0	0%	0	0%	30	1%
Other	50	2%	450	7%	390	13%
Total:	2,400	100%	6,420	100%	3,000	100%

Avg Vehicle Occupancy	From District		To District		Within District	
24 Hours	1.25		1.24		1.29	
AM Peak Period	1.27		1.25		1.34	
PM Peak Period	1.21		1.22		1.31	

Transit Modal Split	From District		To District		Within District	
24 Hours	3%		3%		1%	
AM Peak Period	5%		8%		1%	
PM Peak Period	6%		4%		0%	