

Ottawa Inner Area

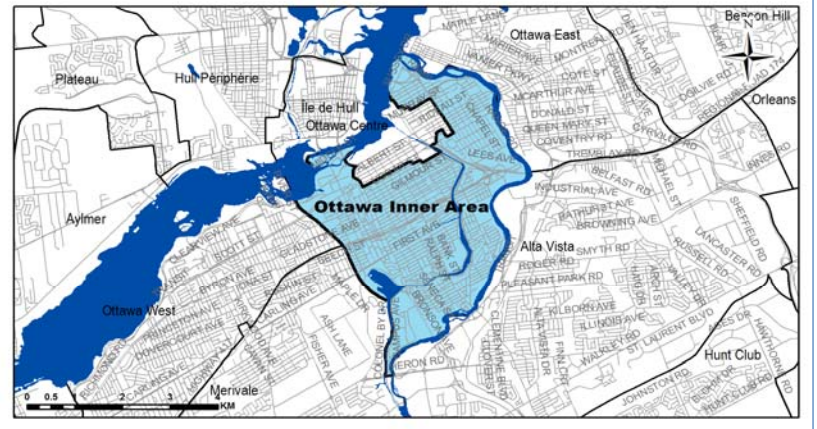
Demographic Characteristics

Population	86,790	Actively Travelled	72,340
Employed Population	45,370	Number of Vehicles	32,580
Households	45,430	Area (km ²)	16.4

Occupation Status (age 5+)	Male	Female	Total
Full Time Employed	21,170	18,680	39,850
Part Time Employed	2,550	2,960	5,520
Student	8,310	9,560	17,870
Retiree	5,810	7,960	13,770
Unemployed	1,430	1,280	2,710
Homemaker	30	1,810	1,850
Other	1,030	1,030	2,050
Total:	40,340	43,290	83,630

Traveller Characteristics	Male	Female	Total
Transit Pass Holders	9,170	11,080	20,240
Licensed Drivers	28,610	29,590	58,200
Telecommuters	460	300	760
Trips made by residents	119,140	130,660	249,800

Selected Indicators	
Daily Trips per Person (age 5+)	2.99
Vehicles per Person	0.38
Number of Persons per Household	1.91
Daily Trips per Household	5.50
Vehicles per Household	0.72
Workers per Household	1.00
Population Density (Pop/km ²)	5290

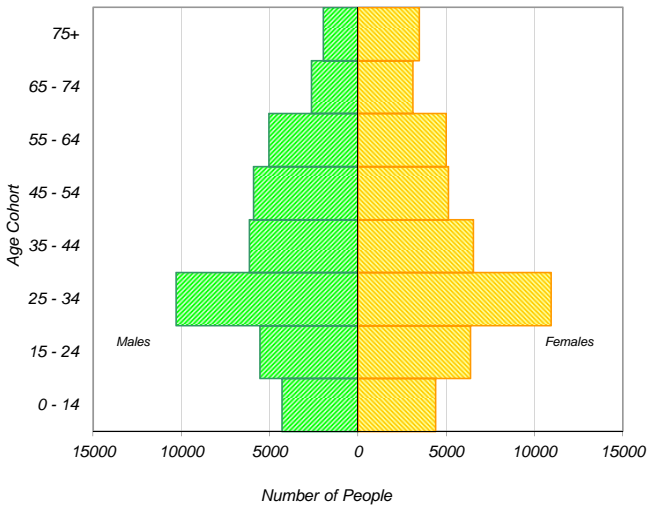


Household Size		
1 person	22,750	50%
2 persons	14,360	32%
3 persons	4,230	9%
4 persons	2,600	6%
5+ persons	1,480	3%
Total:	45,430	100%

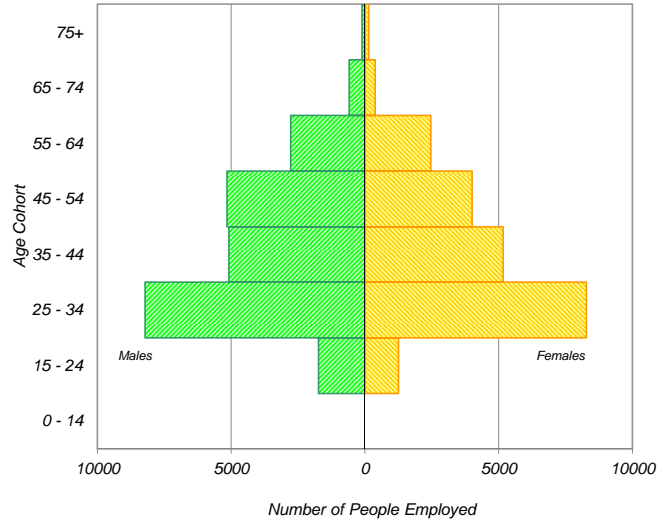
Households by Vehicle Availability		
0 vehicles	18,620	41%
1 vehicle	21,890	48%
2 vehicles	4,220	9%
3 vehicles	590	1%
4+ vehicles	120	0%
Total:	45,430	100%

Households by Dwelling Type		
Single-detached	6,530	14%
Semi-detached	2,860	6%
Townhouse	3,320	7%
Apartment/Condo	32,720	72%
Total:	45,430	100%

Population



Employed Population

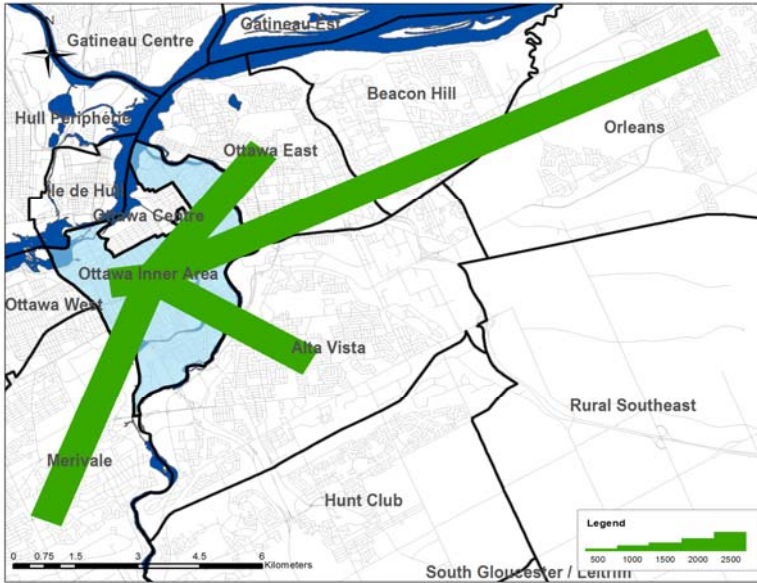


* In 2005 data was only collected for household members aged 11+ therefore these results cannot be compared to the 2011 data.

Travel Patterns

Top Five Origins of Trips to Ottawa Inner Area

AM Peak Period



Summary of Trips to and from Ottawa Inner Area

AM Peak Period (6:30 - 8:59)

Districts	Destinations of Trips From		Origins of Trips To	
	District	% Total	District	% Total
Ottawa Centre	9,420	21%	1,160	2%
Ottawa Inner Area	17,180	37%	17,180	28%
Ottawa East	1,960	4%	3,670	6%
Beacon Hill	1,450	3%	1,380	2%
Alta Vista	4,270	9%	4,970	8%
Hunt Club	830	2%	3,060	5%
Merivale	3,260	7%	4,710	8%
Ottawa West	1,750	4%	3,080	5%
Bayshore / Cedarview	830	2%	2,860	5%
Orléans	630	1%	4,800	8%
Rural East	70	0%	250	0%
Rural Southeast	60	0%	830	1%
South Gloucester / Leitrim	250	1%	530	1%
South Nepean	340	1%	2,270	4%
Rural Southwest	150	0%	580	1%
Kanata / Stittsville	970	2%	3,350	5%
Rural West	20	0%	380	1%
Île de Hull	1,330	3%	440	1%
Hull Périphérie	670	1%	1,350	2%
Plateau	0	0%	1,040	2%
Aylmer	200	0%	1,050	2%
Rural Northwest	40	0%	240	0%
Pointe Gatineau	130	0%	1,470	2%
Gatineau Est	110	0%	700	1%
Rural Northeast	0	0%	500	1%
Buckingham / Masson-Angers	10	0%	240	0%
Ontario Sub-Total:	43,440	95%	55,060	89%
Québec Sub-Total:	2,490	5%	7,030	11%
Total:	45,930	100%	62,090	100%

Trips by Trip Purpose

24 Hours	From District		To District		Within District	
Work or related	33,110	19%	37,330	21%	11,400	11%
School	4,810	3%	34,570	20%	10,560	10%
Shopping	19,380	11%	7,740	4%	11,860	11%
Leisure	15,940	9%	18,120	10%	16,560	15%
Medical	3,560	2%	4,220	2%	2,120	2%
Pick-up / drive passenger	7,310	4%	10,650	6%	5,660	5%
Return Home	84,260	48%	56,020	32%	44,570	41%
Other	6,860	4%	6,870	4%	5,630	5%
Total:	175,230	100%	175,520	100%	108,360	100%

AM Peak (06:30 - 08:59)	From District		To District		Within District	
Work or related	20,960	73%	23,220	52%	5,450	32%
School	3,200	11%	16,280	36%	6,270	37%
Shopping	440	2%	240	1%	290	2%
Leisure	790	3%	750	2%	940	5%
Medical	460	2%	500	1%	240	1%
Pick-up / drive passenger	1,120	4%	2,330	5%	1,490	9%
Return Home	1,180	4%	900	2%	1,170	7%
Other	590	2%	730	2%	1,320	8%
Total:	28,740	100%	44,950	100%	17,170	100%

PM Peak (15:30 - 17:59)	From District		To District		Within District	
Work or related	1,250	3%	880	2%	510	2%
School	90	0%	2,360	7%	770	3%
Shopping	4,250	9%	1,950	5%	3,320	13%
Leisure	3,140	7%	4,730	13%	3,240	13%
Medical	540	1%	490	1%	480	2%
Pick-up / drive passenger	2,490	5%	2,410	7%	1,560	6%
Return Home	32,930	71%	21,350	59%	14,280	56%
Other	1,690	4%	1,770	5%	1,350	5%
Total:	46,380	100%	35,940	100%	25,510	100%

Peak Period (%)	Total:	% of 24 Hours	Within District (%)
24 Hours	459,110		24%
AM Peak Period	90,860	20%	19%
PM Peak Period	107,830	23%	24%

Trips by Primary Travel Mode

24 Hours	From District		To District		Within District	
Auto Driver	76,930	44%	76,620	44%	23,390	22%
Auto Passenger	21,230	12%	21,160	12%	8,750	8%
Transit	49,630	28%	49,160	28%	10,530	10%
Bicycle	6,860	4%	6,780	4%	7,380	7%
Walk	16,280	9%	17,130	10%	55,680	51%
Other	4,280	2%	4,670	3%	2,640	2%
Total:	175,210	100%	175,520	100%	108,370	100%

AM Peak (06:30 - 08:59)	From District		To District		Within District	
Auto Driver	11,370	40%	18,290	41%	3,490	20%
Auto Passenger	2,040	7%	4,080	9%	1,520	9%
Transit	7,060	25%	18,340	41%	2,220	13%
Bicycle	1,780	6%	1,990	4%	1,400	8%
Walk	5,410	19%	1,160	3%	7,530	44%
Other	1,070	4%	1,060	2%	1,020	6%
Total:	28,730	100%	44,920	100%	17,180	100%

PM Peak (15:30 - 17:59)	From District		To District		Within District	
Auto Driver	20,690	45%	15,420	43%	5,250	21%
Auto Passenger	5,070	11%	3,950	11%	2,110	8%
Transit	15,190	33%	7,820	22%	2,430	10%
Bicycle	2,440	5%	2,130	6%	1,750	7%
Walk	2,100	5%	5,840	16%	13,460	53%
Other	900	2%	770	2%	480	2%
Total:	46,390	100%	35,930	100%	25,480	100%

Avg Vehicle Occupancy	From District		To District		Within District	
24 Hours	1.28		1.28		1.37	
AM Peak Period	1.18		1.22		1.44	
PM Peak Period	1.25		1.26		1.40	

Transit Modal Split	From District		To District		Within District	
24 Hours	34%		33%		25%	
AM Peak Period	34%		45%		31%	
PM Peak Period	37%		29%		25%	